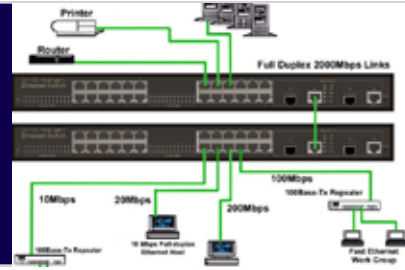


SEMINAR



MANAGED ETHERNET SWITCH BASICS & SETUP

John Mower, Industrial Network Engineer from Hirshmann, will cover the basics of networking hardware and how to configure managed switches for the automation environment. See firsthand how the integration of switch management with RSLogix 5000 makes this easy. John will also discuss the growing trend of Power over Ethernet. This seminar is tailored for those new to Industrial Ethernet.

Sign up today, space is limited.

SEMINAR AGENDA

Basic Networking Terminology

Types of communication

- a. TCP/IP vs. UDP/IP

Hardware Overview

- a. Hubs Switches
- b. Layer 2/3 Switches
- c. Routers

Multicast Messaging vs. Unicast

IGMP Snooping

VLAN's

Redundancy and Topologies

- a. Spanning Tree
- b. Star
- c. Ring
- d. Daisy Chain

Demonstration of tools for configuring Managed Switches

REGISTRATION DETAILS

Date: Wednesday, July 28, 2010

Time: 8:30am - 11:30am

Location: Rumsey Conshohocken
15 Colwell Lane
Conshohocken, PA 19428

Registration: Barb Dever
bdever@Rumsey.com
(610)832-9150

Sponsored by:



QUALITY & SERVICE - SINCE 1895